

Census 2000 Redistricting Data (P.L. 94-171) Summary File

Contents

[Getting Started](#)

[Using the Data Browser](#)

[More About the Data Files](#)

[Technical Support](#)

Introduction

Public Law (P.L.) 94-171, enacted in 1975, directs the U.S. Census Bureau to make special preparations to provide redistricting data needed by the 50 states. It specifies that within a year following Census Day (by April 1, 2001), the Census Bureau must send the governor and legislature in each state the data they need to redraw districts for the United States Congress and state legislature. The objective of the Census 2000 Redistricting Data Program was to produce the data that the Census Bureau provides to states to meet the requirements of P.L. 94-171.

To meet this legal requirement, the Census Bureau set up a program that affords state officials an opportunity before each decennial census to define the small areas for which they wish to receive census population totals for redistricting purposes. Officials then could receive data for voting districts (e.g., election precincts, wards, state house and senate districts) in addition to standard census geographic areas, such as counties, cities, census tracts, and blocks. State participation in defining areas is voluntary and nonpartisan.

Getting Started

The CD-ROM automatically displays the **control panel** when you place it in your CD-ROM reader. If it does not start automatically, double-click the CD-ROM icon displayed under **My Computer** on the **Windows Desktop**.

The **control panel** offers the following selections:

Install

Install the Data Browser software (do this first).

Documentation

Display the Census 2000 Redistricting Data (P.L. 94-171) Summary File Technical Documentation.

Explore This CD

Explore the contents of the CD-ROM¹.

Launch

Launch the Data Browser software.

Note:

¹To find the ASCII files on the CD-ROM, click **Explore This CD**, open the **Data** folder, then open the **ASCII_Files** folder. The contents of the three compressed files (**ssgeo.upl.zip**, **ss00001.upl.zip**, and **ss00002.upl.zip**) are described in the Technical Documentation. The corresponding database files located in the **Data** folder are **ssgeo.dbf**, **ss00001.dbf**, and **ss00002.dbf**. Note that "**ss**" represents the state code.

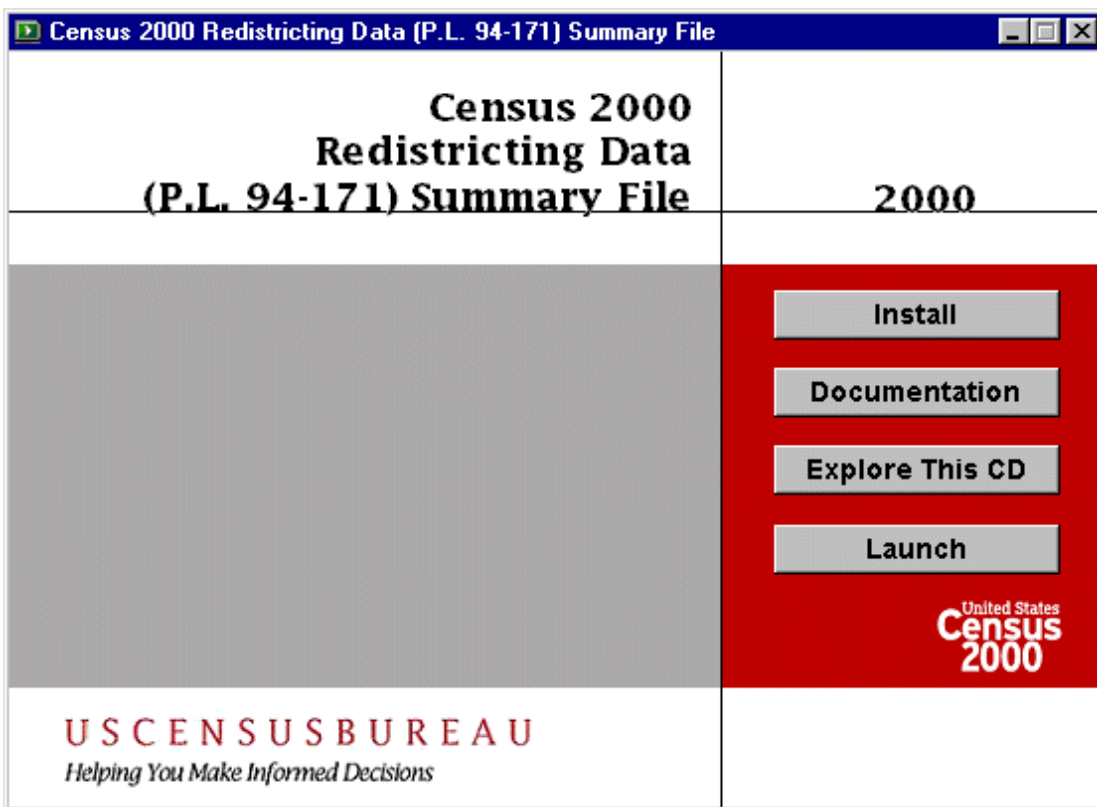
Using the Data Browser

To begin using the **Data Browser** software, click **Launch** on the **control panel**.

The **Data Browser** has three windows: **main**, **detail**, and **copy**.

The following series of screens guides you through a procedure to:

1. Display the **Geographic Comparison Table** showing data for County (totals) in the selected State. (**main** window)
2. Show more detail for a selected county, including the **Quick Table**, **Detailed Tables**, and **Geographic Identifiers**. (**detail** window)
3. Copy the data to an output file. (**copy** window)

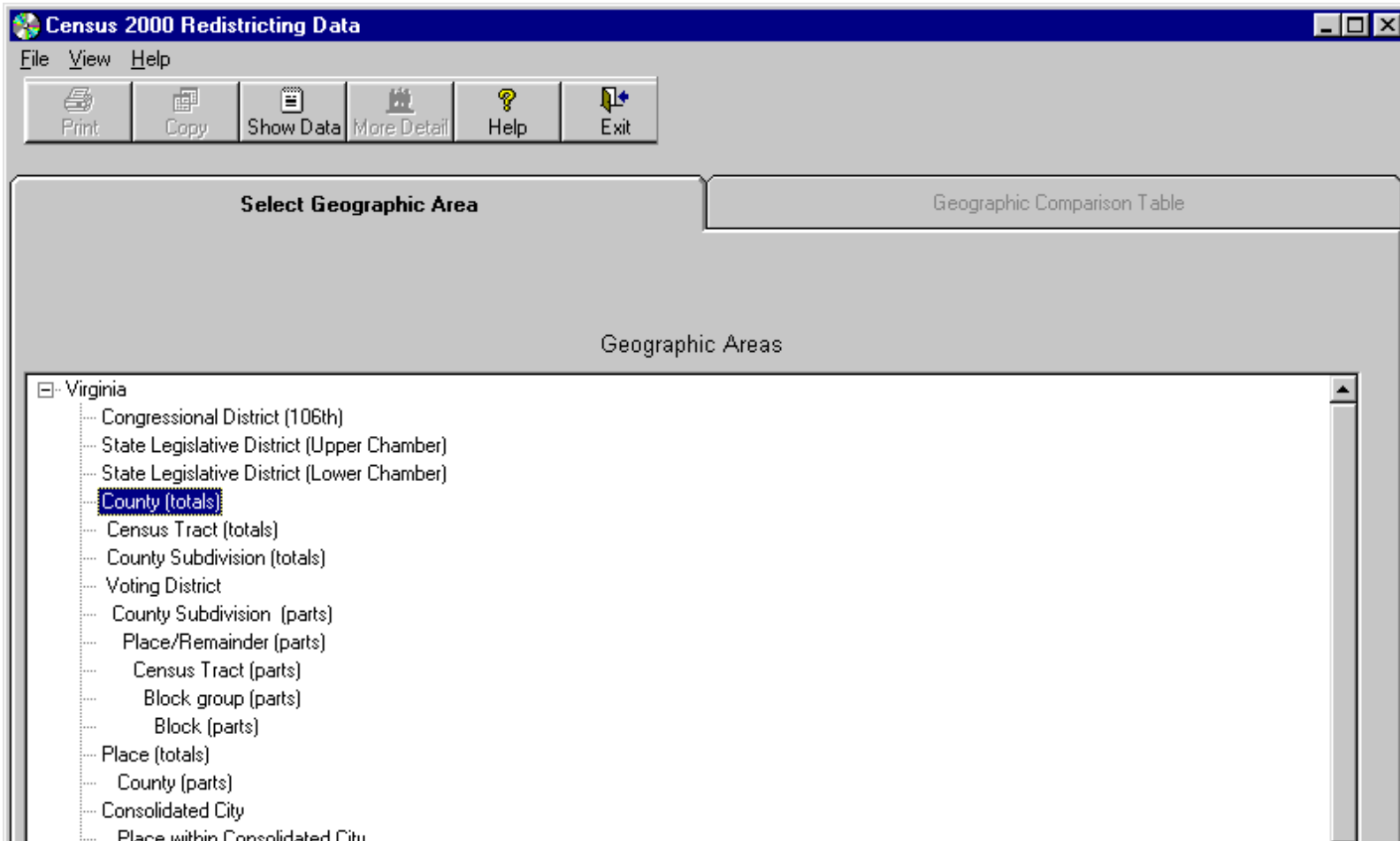


Select Geographic Area

The **main** window opens immediately after you click **Launch** on the **control panel**. It presents a list of the available geographic areas under the **Select Geographic Area** tab.

The **Geographic Areas** menu will guide you through the geographic selection hierarchy as needed, depending on the type of area selected.

Double-click **County (totals)** to display the **Geographic Comparison Table**.



- ... American Indian Area/Alaska Native Area/Hawaiian Home Land
- ... American Indian Area/Alaska Native Area/Hawaiian Home Land-County
- ... American Indian Area/Alaska Native Area (Reservation or Statistical Entity Only)
- ... American Indian Area/Alaska Native Area (Reservation or Statistical Entity Only)-County

Geographic Comparison Table

The following screen shows the **Geographic Comparison Table** for County (totals) in the selected State.

Census 2000 Redistricting Data

File View Help

Print Copy Show Data More Detail Help Exit

Select Geographic Area

County (totals)

Race and Hispanic or Latino: 2000

NOTE: Data not adjusted based on the Accuracy and Coverage Evaluation. For information on confidentiality protection, sampling error, nonsampling error, and definitions, see text.

Geographic Area	Total population	Race								Hispanic or Latino (of any race)
		One race								
		Total	White	Black or African American	American Indian and Alaska Native	Asian	Native Hawaiian and Other Pacific Islander	Some other race	Two or more races	
Accomack County	38,305	37,966	24,276	12,089	125	86	23	1,367	339	2,062
Albemarle County	79,236	78,217	67,474	7,650	135	2,268	9	681	1,019	2,029
Alleghany County	12,926	12,857	12,454	317	27	31	2	26	69	47
Amelia County	11,400	11,324	8,045	3,198	32	19	2	28	76	91
Amherst County	31,894	31,593	24,772	6,311	259	113	6	132	301	306
Appomattox County	13,705	13,628	10,408	3,140	18	23	3	36	77	65
Arlington County	189,453	181,224	130,601	17,705	662	16,327	143	15,786	8,229	35,268
Augusta County	65,615	65,218	62,347	2,360	101	185	15	210	397	620
Bath County	5,048	5,014	4,659	317	11	19	3	5	34	18
Bedford County	60,371	59,926	55,649	3,767	119	261	9	121	445	449
Bland County	6,871	6,824	6,515	288	6	8	1	6	47	32

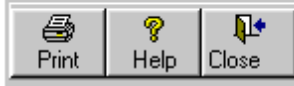
Highlighted area: **Arlington County**

More Detail

To display more detail for a particular line in the **Geographic Comparison Table**, double-click that line or highlight it and click the **More Detail** button. This action opens the **detail** window.

Quick Table

The initial display in the **detail** window is the **Quick Table** profile of the selected county. The format of the **Quick Table** is comparable to that found in the American FactFinder.



Geographic Area: Arlington County

NOTE: Data not adjusted based on the Accuracy and Coverage Evaluation. For information on confidentiality protection, sampling error, nonsampling error, and definitions, see text.

Quick Table

Detailed Tables

Geographic Identifiers

	All ages		18 years and over	
	Number	Percent	Number	Percent
RACE				
Total population	189,453	100.0	158,214	100.0
One race	181,224	95.7	152,242	96.2
White	130,601	68.9	112,370	71.0
Black or African American	17,705	9.3	14,042	8.9
American Indian and Alaska Native	662	.3	511	.3
Asian	16,327	8.6	13,705	8.7
Native Hawaiian and Other Pacific Islander	143	.1	116	.1
Some other race	15,786	8.3	11,498	7.3
Two or more races	8,229	4.3	5,972	3.8
HISPANIC OR LATINO AND RACE				
Total population	189,453	100.0	158,214	100.0
Hispanic or Latino (of any race)	35,268	18.6	26,101	16.5
Not Hispanic or Latino	154,185	81.4	132,113	83.5

Detailed Tables

Click the **Detailed Tables** tab to display the four detailed tables (PL1 - PL4) for the selected county.

Arlington County

File Help

Print Help Close

Geographic Area: Arlington County

NOTE: Data not adjusted based on the Accuracy and Coverage Evaluation. For information on confidentiality protection, sampling error, nonsampling error, and definitions, see text.

Quick Table **Detailed Tables** Geographic Identifiers

PL1. RACE [71]

Universe: Total population	
Total	189,453
Population of one race	
White alone	130,601
Black or African American alone	17,705
American Indian and Alaska Native alone	662
Asian alone	16,327
Native Hawaiian and Other Pacific Islander alone	143
Some other race alone	15,786
Population of two or more races	
Population of two races	
White; Black or African American	538
White; American Indian and Alaska Native	446
White; Asian	1,381
White; Native Hawaiian and Other Pacific Islander	60
White; Some other race	3,719
Black or African American; American Indian and Alaska Native	127
Black or African American; Asian	125
Black or African American; Native Hawaiian and Other Pacific Islander	17
Black or African American; Some other race	692
American Indian and Alaska Native; Asian	52

Geographic Identifiers

Click the **Geographic Identifiers** tab.

To return to the **main window**, click the **Close** button.

Arlington County

File Help

Print Help Close

Geographic Area: Arlington County

NOTE: Data not adjusted based on the Accuracy and Coverage Evaluation. For information on confidentiality protection, sampling error, nonsampling error, and definitions, see text.

Quick Table Detailed Tables **Geographic Identifiers**

FILEID	File Identification	uPL	
STUSAB	State/US-Abbreviation (USPS)	VA	
SUMLEV	Summary Level		050
GEOCOMP	Geographic Component		00
CHARITER	Characteristic Iteration		000
CIFSN	Characteristic Iteration File Sequence Number		
LOGRECNO	Logical Record Number		0007576
REGION	Region		3
DIVISION	Division		5
STATECE	State (Census)		54
STATE	State (FIPS)		51
COUNTY	County		013
COUNTYSC	County Size Code		
COUSUB	County Subdivision (FIPS)		
COUSUBCC	FIPS County Subdivision Class Code		
COUSUBSC	County Subdivision Size Code		
PLACE	Place (FIPS)		
SUBMCD	Subminor Civil Division		
PLACECC	FIPS Place Class Code		
PLACEDC	Place Description Code		1
PLACESC	Place Size Code		

Copy Data to an Output File

To open the **copy** window, click the **Copy** button in the **main** window.
 Select data items from **Items available to copy** and click the **Select** button. These items appear under **Number of items selected**.
 Check the **Include record layout...** box to create a documentation file.
 Click **OK** to finish.

Copy

Items available to copy

P1-1: Total
P1-2: Population of one race
P1-3: White alone
P1-4: Black or African American alone
P1-5: American Indian and Alaska Native alone
P1-6: Asian alone
P1-7: Native Hawaiian and Other Pacific Islander alone
P1-8: Some other race alone

Number of items selected: 3

Select

Delete

Delete All

P1-1: Total
P1-2: Population of one race
P1-3: White alone

All Counties (totals) in Virginia

Include record layout and technical documentation file

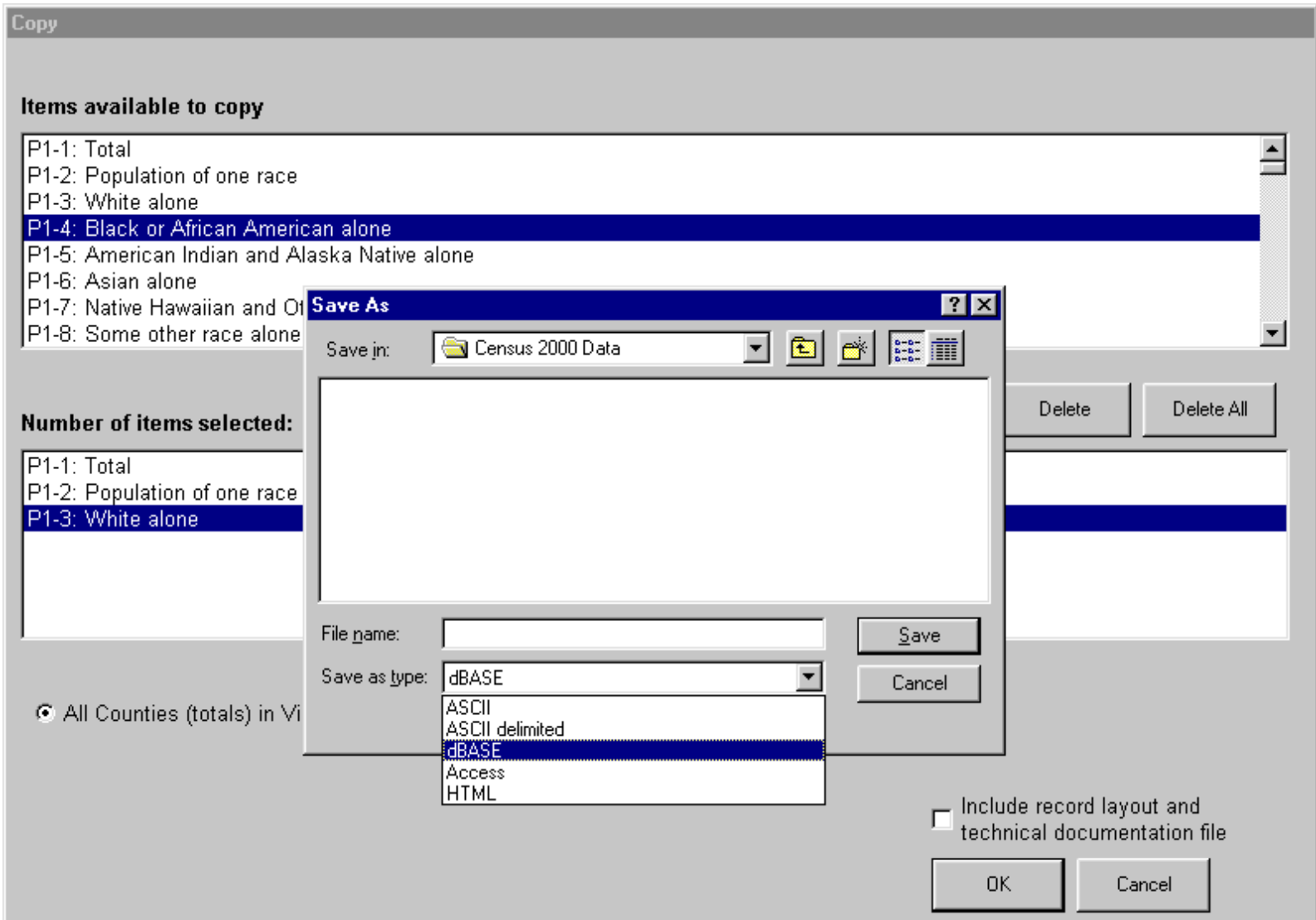
OK

Cancel

Copy Data to an Output File (continued)

After you click **OK**, use **Save As** to specify the characteristics of the output file.

These characteristics include file name, path, and type.



More About the Data Files

Database File in \Data\	Zipped ASCII File in \Data\ASCII_Files\	Contents of the File
ssgeo.dbf	ssgeo.upl.zip (ssgeo.upl when uncompressed)	Geographic identifiers
ss00001.dbf	ss00001.upl.zip (ss00001.upl when uncompressed)	Tables PL1 and PL2
ss00002.dbf	ss00002.upl.zip (ss00002.upl when uncompressed)	Tables PL3 and PL4

The zipped ASCII geographic identifier file (ssgeo.upl.zip) contains fixed ASCII fields described in the Data Dictionary (pdf) of the Census 2000 Redistricting Data (Public Law 94-171) Summary File Technical Documentation. The zipped data files (ss00001.upl.zip and ss00002.upl.zip) contain comma-delimited ASCII files.

The database files are FoxPro DBFs tested for compatibility with Microsoft FoxPro™ 3.x and higher, dBase™ 7.x, Microsoft Access™ 97 and Microsoft Excel™ 97. All numeric fields in the database files are stored as "integer" (long integer binary numbers). Tips on using these files with Access and Excel are as follow:

Access 97

1. File | New Database (specify new database)
2. File | Get External Data | Import (specify file to import and identify it as a FoxPro file)

Excel 97

1. File | New
2. Data | Get External Data | Create New Query
 - . Choose Data Source
 - i. Select "FoxPro Files"
 - ii. Select "Use the Query Wizard..."

- iii. Browse the "Data" folder under "D:*" (close box)*
 - iv. Select "OK"
 - b. Query Wizard - Choose Columns
 - i. For example: select "**ss00001**"
 - ii. Select "Next" for next several boxes until...
 - c. Query Wizard - Finish
-

Technical Support

301-457-1324 Voice

301-457-1296 Fax

TechSupp@Census.gov

*Electronic Products Development Branch
Administrative and Customer Services Division
U.S. Census Bureau*

U S C E N S U S B U R E A U
Helping You Make Informed Decisions